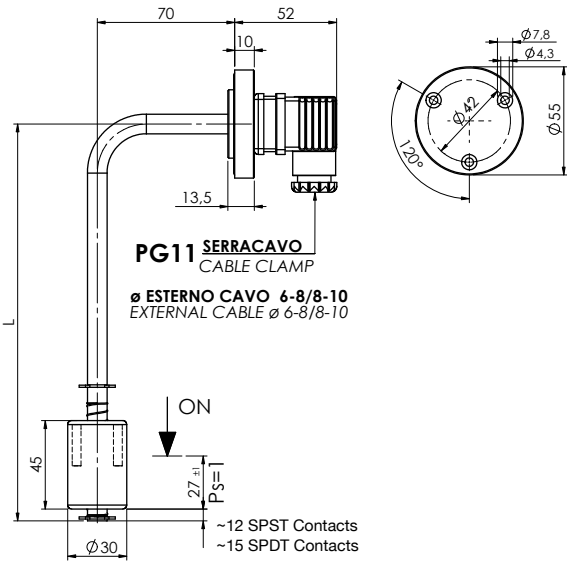
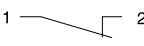
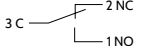
 A richiesta disponibile la versione certificata ATEX
Version ATEX available on request



| | Codice Part number | |
|--|---|--|
| Lunghezza / Length mm | 1  2 | 3 C  |
| 103 | PG3▲103 - 100 | PG3▲103 - 500 |
| 200 | PG3▲200 - 100 | PG3▲200 - 500 |
| 250 | PG3▲250 - 100 | PG3▲250 - 500 |
| 300 | PG3▲300 - 100 | PG3▲300 - 500 |
| 350 | PG3▲350 - 100 | PG3▲350 - 500 |
| Per passare da N.C. a N.A. è sufficiente capovolgere il galleggiante The contact can be converted from N.C. to N.O. by rotating the float upside down | Contatto SPDT SPDT Contact | |

| |
|--|
| ▲ Fissaggio Fixing |
| 0 Flangia 3 fori 0 3 holes flange |
| 1 Attacco 1" GAS 1 1" G Thread |
| 2 Flangia 2 fori Ø 42 mm 2 2 holes flange Ø 42 mm |
| 2P Flangia 2 fori Ø 43 mm 2P 2 holes flange Ø 43 mm |
| 3 M 18 X1,5 3 M 18 X1,5 |

Per versioni personalizzate (lunghezza, temperatura > 100°C, ecc.) contattare i nostri Uffici Commerciali.
For customized version (length, temperature > 100°C, etc.) please contact our Customer Service.

| | |
|----------------------------------|---|
| Impiego Use | Oli minerali - Carburanti Mineral oils - Fuels |
| Montaggio Mounting | Laterale Lateral |
| Fissaggio Fixing | Flangia in Alluminio 3 fori 3 Holes Aluminum flange |
| Stelo Stem | Ottone Brass |
| Galleggiante Float | Nylon espanso (per pressioni > di 1 bar si consiglia il galleggiante in NBR) Foamed nylon (for pressure > 1 bar use NBR float) |
| Seeger | Bronzo fosforoso Phosphorous bronze |
| O-Ring | NBR |
| Tipo contatto Type of contact | Reed N.A./N.C. (SPDT) Reed N.O./N.C. (SPDT) |

| | |
|---|---|
| Max potenza commut. Max switch. capacity | 80 W - (50 W SPDT) |
| Max corrente commut. Max switch. current | 1 A - (1 A SPDT) |
| Max tensione commut. Max switch. voltage | 250 Vac - (220 Vac SPDT) |
| Grado di protezione Protection degree | IP65 con connettore a norme UNI EN 175301-803 (DIN43650) IP65 with connector according to UNI EN 175301-803 (DIN43650) |
| Peso specif. liquido Specific fluid weight | > 0,75 |
| Temp. in funzionamento Working temperature | -20°C / +100°C |
| Peso Weight | ~ 180 gr |