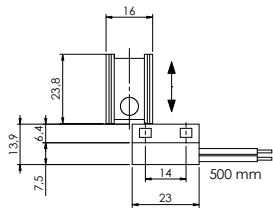
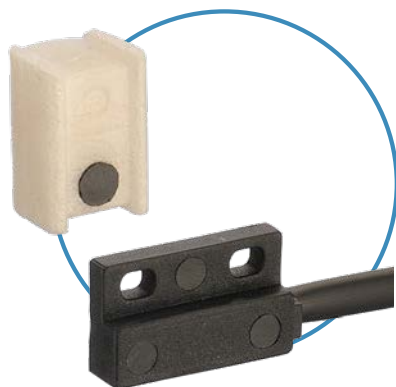
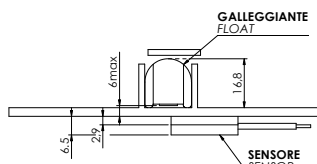


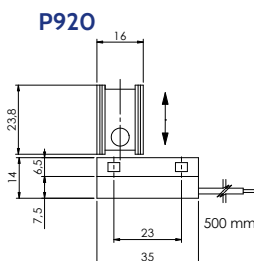
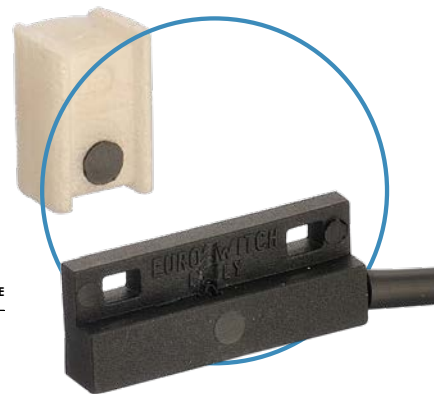
P915



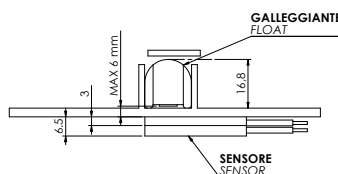
P915



P920



P920



		Codice Part number	
Mod.		NERO BLACK — NERO BLACK	ARANCIONE ORANGE — NC MARRONE/BROWN — NO BIANCO/WHITE
P915	Sensore / Sensor	P915FZ - 100	-
	Galleggiante / Float	GLL016 - 002	-
P920	Sensore / Sensor	P920FZ - 100	P920FZ - 500
	Galleggiante / Float	GLL016 - 002	GLL016 - 002

Nel caso di connessioni non isolate devono essere prese le adeguate precauzioni per garantire la distanza minima di sicurezza tra i diversi morsetti.  
Per versioni personalizzate (tipo di cablaggio, temperatura > 80°C, tensione > 50V, ecc.) contattare Euroswitch.

*When using non-insulated connections, the necessary precautions must be taken to ensure the minimum safety distance between the terminals.  
For Customized version (type of cable, temperature > 80°C, voltage > 50V, etc.) please contact Euroswitch.*

Impiego Use		Acqua - Acidi - Detergenti Water - Acids - Detergent
Stelo Stem		Nylon
Galleggiante Float		Polipropilene Polypropylene
Uscita cablaggio Wiring output		500 mm PVC
Tipo contatto Type of contact	P915	Reed N.A. Reed N.O.
	P920	Reed N.A. / SPDT Reed N.O. / SPDT
Max potenza commut. Max switch. capacity	P915	10 W
	P920	40 W - (3W SPDT)

Max corrente commut. Max switch. current	P915	0,5 A
	P920	1 A - (0,25A SPDT)
Max tensione commut. Max switch. voltage		50 V
Peso specif. liquido Fluid specific weight		> 0,8
Temp. di funzionamento Working temperature		-10°C / +80°C
Peso Weight	P915	~ 8/10 gr
	P920	~ 10 gr