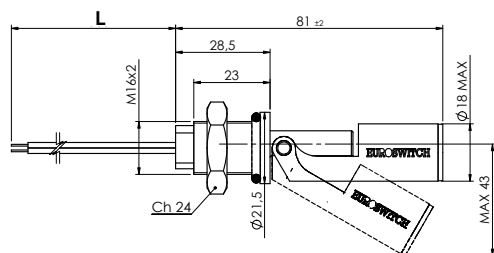


P500AH



P500F8



		Codice Part number	
Connessione elettrica Electrical connection	Materiale Stelo - Galleggiante Material Stem - Float		ORANGE OR BLACK — NC WHITE OR BLUE — NO BROWN
L = 500 mm fili/wires	Polipropilene Polypropylene	P500AH - 100	P500AH - 500
	Nylon Nylon	P500F8 - 100	P500F8 - 500
L = 1 mt cavetto/cable	Polipropilene Polypropylene	P500AH - 110	P500AH - 510
	Nylon Nylon	P500F8 - 110	P500F8 - 510
L = 2 mt cavetto/cable	Polipropilene Polypropylene	P500AH - 120	P500AH - 520
	Nylon Nylon	P500F8 - 120	P500F8 - 520
Per passare da N.C. a N.A. è sufficiente capovolgere il galleggiante The contact can be converted from N.C. to N.O. by rotating the float upside down			Contatto SPDT SPDT Contact

Nel caso di connessioni non isolate devono essere prese le adeguate precauzioni per garantire la distanza minima di sicurezza tra i diversi morsetti.
Per versioni personalizzate (materiali, tipo di cablaggio, temperatura > 80°C, tensione > 50V, ecc.) contattare Euroswitch.

When using non-insulated connections, the necessary precautions must be taken to ensure the minimum safety distance between the terminals.
For customized version (material, type of cable, temperature > 80°C, voltage > 50V, etc.) please contact Euroswitch.

Impiego Use	P500AH	Acqua - Acidi (Fluidi alimentari a richiesta) Water - Acids (Alimentary liquids on request)	Max potenza commut. Max switch. capacity	40 W - (3 W SPDT)
	P500F8	Oli minerali - Gasolio Mineral oils - Diesel fuel		
Fissaggio Fixing	M 16X2		Max corrente commut. Max switch. current	1 A - (0,25 A SPDT)
	Stelo Stem	P500AH		
P500F8		Nylon	Max tensione commut. Max switch. voltage	P500AH 50 V (250V a richiesta) 50 V (250V on request)
Galleggiante Float	P500AH	Polipropilene Polypropylene		
	P500F8	Nylon	Peso specif. liquido Specific fluid weight	P500AH > 0,75
Dado Nut	Nylon			
	O-Ring	P500AH	Silicone Silicone	P500F8 -10°C / +100°C
P500F8		Viton	Peso Weight	
Tipo contatto Type of contact	Reed N.A./N.C. (SPDT) Reed N.O./N.C. (SPDT)			P500F8 ~ gr 24